

AASCTF Inaugural Forum

Korean American Stomach Cancer Disparity: 'Overcoming the Barriers'

October 6, 2018 at 2PM

Double Tree By Hilton, Fort Lee, NJ

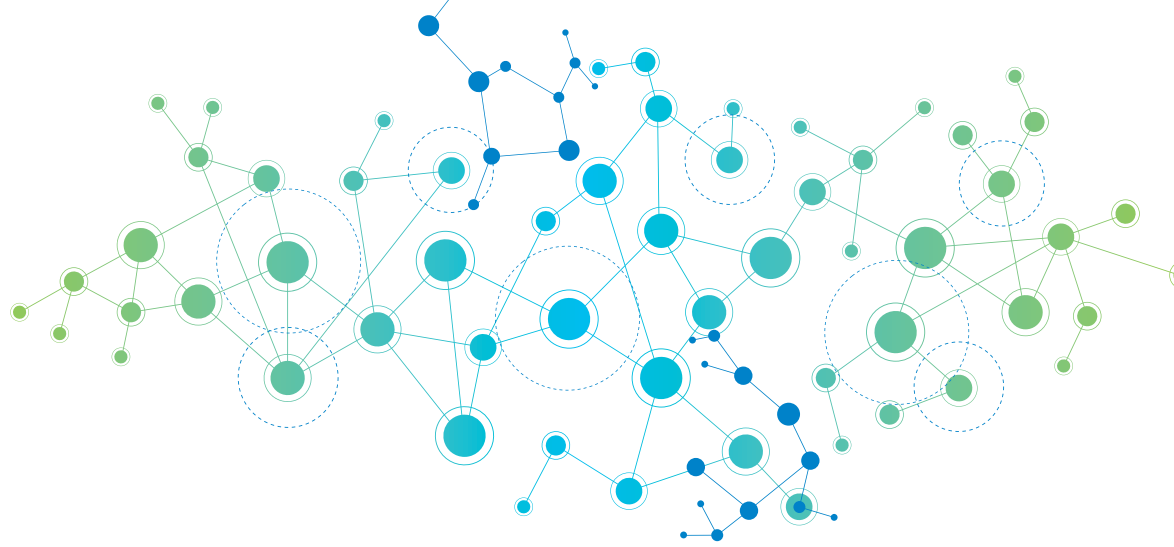
Asian
American
Stomach
Cancer
Task
Force

Asian American Stomach Cancer Task Force (AASCTF) was established to raise awareness and to seek resources for Asian Americans on prevention, detection and treatment of stomach cancer.

WKMO WORLD KOREAN
MEDICAL ORGANIZATION

 **SNUCMAA**
Seoul Nation University College of Medicine Alumni Association

KHIDI, KACE, AWCA, Englewood Hospital Medical Center, Holy Name Medical Center, KRADIO, KCS, CVH.



Program

Emcee: Steve Kwon, MD, MPH / Holy Name Medical Center

Welcome

David Ko, MD / President, World Korean Medical Organization

Greetings

Johng S. Rhim, MD / Seoul National University College of Medicine Alumni Association

Congratulatory Remark

Hon. Ambassador Hyo-Sung Park / Consul General, ROK

Hon. Senator Bob Menendez / The US Senate Foreign Relations Committee

Kwang S. Kim / President, The Korean Community Services of Metropolitan New York

Epidemiology of Stomach Cancer Disparity in Korean Americans

Eunjung Lee, PhD / Keck School of Medicine at University of Southern California

Gastric Cancer Screening and Early Treatment

Joo Ha Hwang, MD, PhD / Stanford University

“Korean Gastric Cancer: New Direction to Improve Outcomes”

Joseph Kim, MD / University of Kentucky

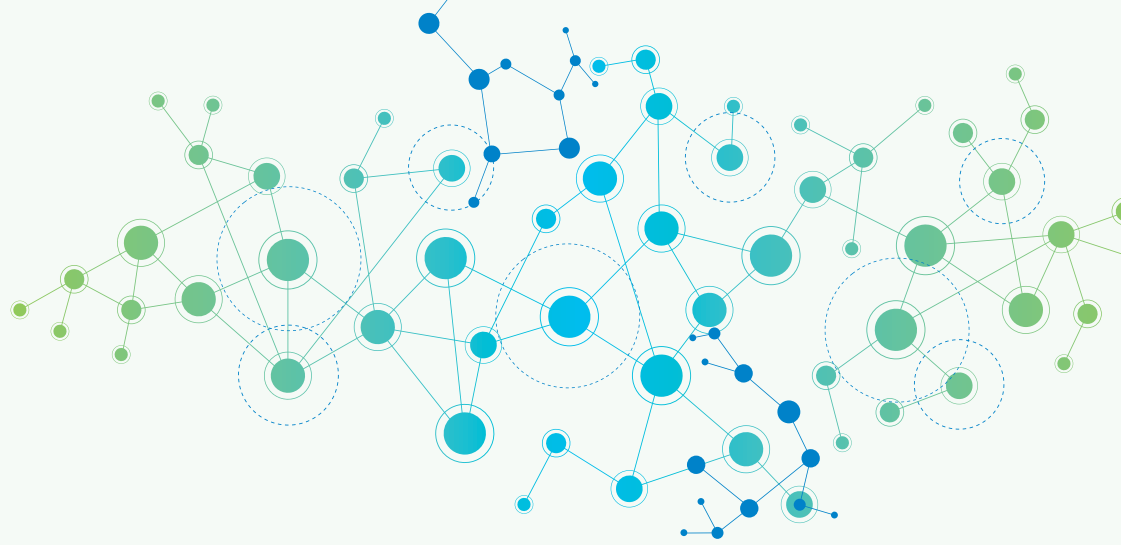
Comparison of Gastric Cancer Outcomes East vs. West

Steven Brower, MD / Englewood Hospital Medical Center and Icahn School of Medicine at Mount Sinai

Closing, Q & A

Chul S. Hyun, MD, PhD / Chair, Asian American Stomach Cancer Task Force

The Asian American Stomach Cancer Task Force Meeting at 7 PM will be coordinated By:
Johng S. Rhim, MD, Chan H. Park, MD, PhD, InHwan Oh, PhD.



Program at Glance

Date	Time	Description	Location (Doule Tree by Hilton, Fort Lee, NJ)
10.6(Sat)	2:00- 5:00PM	Forum	Conference Room
	7:00-10:00PM	Task Force Meeting (Members Only)	Board Room
10.7(Sun)	8:00-10:00AM	Breakfast Meeting (Members Only)	Board Room

GREETINGS



Dear Friends and Colleagues,

Welcome to the Asian American Stomach Cancer Task Force (AASCTF) Inaugural Forum!

Seoul National University College of Medicine Alumni Association and World Korean Medical Organization are proud to host the First AASCTF Forum entitled '*Korean American Stomach Cancer Disparity: Overcoming the barriers*'.

Stomach cancer incidence varies substantially by race and ethnicity in the United States, with Korean Americans experiencing by far the highest incidence. In addition, there is a striking disparity in the stomach cancer mortality between Korean Americans and South Koreans.

The AASCTF was established to achieve the following:

- (1) to raise awareness on stomach cancer and its risk factors in Asian American communities local and nationwide and to develop mechanisms that allow better education, information dissemination, prevention, and delivery of care to Asian Americans;
- (2) to collaborate with various community organizations and hospitals to provide linkage to clinical care so that the available healthcare becomes more accessible especially to those disadvantaged; and
- (3) to conduct clinical studies both nationwide and globally.

I hope this Forum will serve to galvanize community-physician partnerships for stomach cancer campaign movements, providing a platform for physicians, researchers, leaders and members of the affected communities to collectively explore innovative ways to promote adequate health access, thereby reducing morbidity and mortality associated with stomach cancer.

Thank you for joining us at the Forum, and we look forward to working with you to further empower our community!

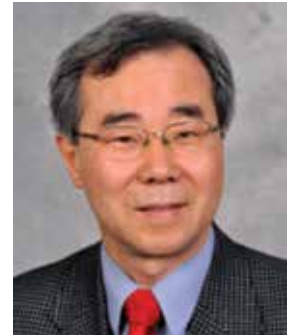
Sincerely,

Chul S. Hyun, MD, PhD
Chair
Asian American Stomach Cancer Task Force

GREETINGS

Dear Members of AASCTF and Guests,

Welcome to the first AASCTF (Asian American Stomach Cancer Task Force) forum. It is a well-known fact that the incidence of stomach cancer is significantly higher in Asian countries, but mortality rates of stomach cancers are much lower. This is especially striking in Far Eastern countries compared to Western countries. The epidemiologic study based on the 1988-2012 California Cancer Registry indicates that Korean Americans had about a 5 time greater incidence of stomach cancer when compared to non-Hispanic whites. This study also found that it was twice that of Japanese Americans. The mortality rate of stomach cancer in the U.S. is twice as high (~70 %) as that of Korean or Japanese populations (~35%). The differences in stomach cancer incidence between Asian and Western countries may be related to lifestyle differences including different diets. Genetic differences may also play a role, but these are difficult to modify. However, the differences in mortality rates are mainly related to the early detection of stomach cancers before they spread to lymph nodes or other organs. They are detected with frequent screening endoscopies and are highly curable by complete resection with or without adjuvant treatment. This is standard and common practice in Far Eastern countries and this can easily be achieved in the United States if the government and insurance companies recognize the striking disparity in stomach cancer mortality between the United States and Far Eastern countries. This would allow screening endoscopies for Asian Americans, who are a very well defined high risk group for developing stomach cancer.



There have been scientific presentations on this topic in various meetings in the past 5 years including the annual meetings of KAMA (Korean American Medical Association) and SNUCMAA of NA (Seoul National University College of Medicine Alumni Association of North America). This is due to the special effort from C. H. Park, M.D. He has raised the awareness of this issue in Korean American physicians. It is in June 2018 that AASCTF (Asian American Stomach Cancer Task Force) was finally assembled after the 35th annual SNUCMAA of NA meeting to raise awareness of this issue. This was not only done in the Korean American Community but also in the larger Asian American Community. By gathering resources from the Asian American Community to promote early detection of stomach cancer, it will be easier to implement proper prevention, detection and treatment of stomach cancer for Asian Americans.

This is the first forum, organized by AASCTF under the leadership of C. S. Hyun, M.D., PhD. As far we know, this is the first Asian American Stomach Cancer Campaign in the United States. I send my deepest appreciation to the excellent speakers and all the attendants of the meeting for making this important meeting successful. We do believe that this meeting will contribute to saving the lives of Asian Americans afflicted by stomach cancer.

Sincerely,

A handwritten signature in black ink, appearing to read "Seung Shin Hahn".

Seung Shin Hahn , M.D.
Immediate Past President,
SNUCMAA of NA

A handwritten signature in black ink, appearing to read "Christopher K Chung".

Christopher K Chung, M.D.
President,
SNUCMAA of NA

GREETINGS



Dear Colleagues,

World Korean Medical Organization (WKMO) is happy to join the SNU Medical College Alumni Association (SNUCMAA) in organizing this epic forum entitled 'Korean American Stomach Cancer Disparity'.

WKMO aims to oversee 36,000 physicians of Korean heritage scattered throughout the world outside of Korean peninsula. In the face of globalization and trans-nationalism, WKMO fosters the building of networks and platforms, linking physicians of one country to another for innovative opportunities. We also challenge physicians go beyond the usual boundary of medicine, and to navigate today's complex healthcare. Two years ago Seoul National University Hospital collaborated with WKMO in a WKMO Global Leadership Series 'Healthcare in North Korea: Past, Present, and Future'. We then discussed many important topics of healthcare in North Korea as there needs to be planning for the integration of healthcare should the divided country unite like Germany did. This may be far from happening but the recent events give more hope.

SNU and Dr. Hee Young Shin, who was then the Director of the SNU Institute for Health and Unification Studies again joined WKMO on June, 2016 in the 'WKMO Symposium on Global Health Disparities' held in the US Congress.

Today's forum has been developed to focus on Gastric cancer amongst Korean Americans. Gastric cancer is significantly higher amongst Asians than Caucasian's, causing a deleterious impact to the Korean community. There are numerous issues to discuss on stomach cancer disparity, including screening and early diagnosis and intervention.

I wish to congratulate Dr. Chul Soo Hyun and his TF members for organizing the forum with a series of talks by many authorities in their fields. As physicians, our leadership and efforts in creating a healthy community should play a vital role in further empowering our community as a whole.

Very Truly Yours,

David Ko, MD

President

World Korean Medical Organization

GREETINGS



**KOREAN CONSULATE GENERAL
NEW YORK, N.Y.**

October 6, 2018

Dear Friends:

It is with great pleasure to extend my heartfelt congratulations to the Asian American Stomach Cancer Task Force (AASCTF) on the occasion of its inaugural forum titled, “Korean American Stomach Cancer Disparity: Overcoming the Barriers.” I would like to thank the organizers for preparing this meaningful gathering that will benefit not only the Korean American community, but more broadly all Asian Americans.

According to a recent Pew Research Center report, Asian Americans are the fastest growing group in the United States. Among many dire issues facing the community, stomach cancer disparity remains one of the serious concerns. In case of Korean Americans, it is reported that the survival statistics for stomach cancer hovers at 30% in the United States, which is considerably lower than the survival rate in Korea where 70% of patients diagnosed with the same ailment have survived.

Recognizing the urgent need to address this important health issue, the AASCTF was established to raise awareness and to seek resources for Asian Americans on prevention, detection, and treatment of stomach cancer. To that end, the forum today will inaugurate the Task Force’s stomach cancer awareness campaign.

As Consul General, I always wish for the continued wellbeing and development of the Korean American community. Along these lines, I sincerely applaud and appreciate the AASCTF’s efforts to provide a platform on which to exchange views and formulate effective strategies in addressing this issue. I truly hope that this timely and meaningful gathering of renowned physicians and key community leaders will generate a positive momentum that would resonate throughout all communities in the United States.

I wish all of you the very best of luck and every success in your future endeavors.

Sincerely,

A handwritten signature in blue ink, consisting of stylized Korean characters.

Amb. Hyo-Sung Park
Consul General

GREETINGS

ROBERT MENENDEZ
NEW JERSEY

COMMITTEES:
BANKING, HOUSING, AND URBAN
AFFAIRS
FINANCE
FOREIGN RELATIONS

United States Senate
WASHINGTON, DC 20510-3005

528 SENATE HART OFFICE BUILDING
WASHINGTON, DC 20510
(202) 224-4744

ONE GATEWAY CENTER
11TH FLOOR
NEWARK, NJ 07102
(973) 645-3030

208 WHITE HORSE PIKE
SUITE 18-19
BARRINGTON, NJ 08007
(856) 757-5353

October 6, 2018

World Korean Medical Organization
35 Van Nostrand Avenue
Englewood, New Jersey 07631



Dear Friends:

Please accept my warmest wishes as you convene the first forum organized by the World Korean Medical Organization's recently launched Asian American Stomach Cancer Task Force. I am honored to recognize the great work your organization is undertaking and recognize the lasting impact your work will have on the health and well-being of many.

An estimated 26,240 people will be diagnosed with stomach cancer in the United States this year alone and stomach cancer is one of the leading causes of cancer-related deaths in the world. Stomach cancer can be difficult to detect and all too often patients are diagnosed in the later stages. Korean Americans experience the highest incidence of stomach cancer. During my time in the Senate I have joined with my colleagues in helping secure additional research funding for stomach cancer through the Department of Defense's research program and look forward to working with you in the future on reducing stomach cancer incidence and death.

The work of your new task force will significantly help raise awareness about stomach cancer and will hopefully help reduce stomach cancer deaths. I would like to extend a special congratulations to Dr. Hyun for his leadership on this important issue and for convening this forum.

Sincerely,

A handwritten signature in black ink that reads "Robert Menendez". The signature is fluid and cursive, with a large initial "R".

ROBERT MENENDEZ
United States Senator

GREETINGS



718 Teaneck Road | Teaneck, NJ 07666
Tel: 201-833-3000 | HolyName.org

October 6, 2018

Dear AASCTF Friends,

On behalf of Holy Name Medical Center, I am honored to recognize the Asian American Stomach Cancer Task Force (AASCTF) on the occasion of your inaugural forum, "Korean American Stomach Cancer Disparity: Overcoming the Barriers," the very first such forum on Asian American stomach cancer in the United States.

Today, I extend my congratulations and support to every AASCTF member for your efforts to raise awareness, foster collaboration, conduct clinical studies and increase access to care for people at risk for, and those affected by, stomach cancer. In particular, I want to commend Dr. Chul Hyun, President of the World Korean Medical Organization and Holy Name medical staff member, for taking the lead in organizing this important initiative. I would also like to recognize Holy Name's Dr. Steve Kwon, surgical oncologist and hepatobiliary surgeon, for taking a leadership role in this project.

The National Institutes of Health has identified stomach cancer as the most prevalent malignancy in Korea, and the number one cancer among Korean men. Korean Americans' incidence of stomach cancer exceeds, by far, that of other Americans, and there is a striking disparity in stomach cancer mortality between Korean Americans and Koreans residing in South Korea. Why is this? What are the risk factors at play? What can we do to prevent and, ultimately, reduce the suffering and death caused by gastric cancers?

Holy Name Medical Center shares AASCTF's concerns about disparities in stomach cancer incidence and the importance of preventive screening and education programs for the Asian population. Our Asian Health Services, a national model for culturally competent care, has much experience transcending cultural barriers, as it promotes awareness and access to care for breast cancer through the Walk for Mom program, and liver cancer through hepatitis B and C screening programs.

I look forward to future collaborations with AASCTF, and extend my best wishes for your growth and success.

Sincerely,

Michael Maron
President & CEO

GREETINGS

Dear Friends,

Englewood Health is proud to support the Asian American Stomach Cancer Task Force inaugural forum. We share in AASCTF's commitment to the health and well-being of Korean Americans.

As a proud recipient of the Healthgrades 2018 Patient Safety Excellence Award and as Bergen County's only hospital in the top 5% in the nation for patient safety by Healthgrades, we are committed to providing the highest level of advanced diagnostic, medical, and surgical services in a compassionate and state-of-the-art environment to all who enter our doors.

Our Center for Korean Health and Wellness is dedicated to ensuring our hospital provides the highest quality health care to the Korean community without cultural and language barriers. We are fortunate to have more than 80 Korean American physicians on staff, with whom we work closely to best serve the Korean community. We also are grateful to have Korean American volunteers serving at our medical center, and we thank them for their support and efforts.

We congratulate Dr. Chul S. Hyun and the AASCTF for their vision and support of the U.S. community of Korean American physicians, and are proud to partner with AASCTF on its future endeavors.

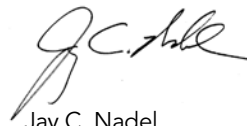
With warmest wishes,



Thomas C. Senter, Esq.
Chairman of the Board
Englewood Health



Warren Geller
President and CEO
Englewood Health



Jay C. Nadel
Chairman of
Englewood Health Foundation



**ENGLEWOOD
HEALTH**

GREETINGS

Good Afternoon Ladies, Gentlemen and Distinguished Guests,

I am very pleased to extend my congratulations to the opening of Korean American Stomach Cancer Disparity: Overcoming Barriers Forum. I would like to send my sincere gratitude to Dr. Chul S. Hyun, Dr. David Mo and the members of the Asian American Stomach Cancer Task Force (AASCTF) for bringing this forum together.

My name is Jonghee Oh, Chief Representative of Korea Health Industry Development Institute's US Office. Our US office has been at the forefront of promoting Korea's healthcare industry since its opening in 2008. Since then, we have been supporting Korean bio and medical institutions entering the US market by building networks with local government agencies and companies as well as collecting state-of-the-art information of the healthcare industry in the US.

In South Korea, stomach cancer has been one of the most commonly diagnosed type of cancer. According to a 2016-2017 registry for cancer by the Korean National Cancer Center, stomach cancer was rated the highest among various types of cancer. Due to the frequent trend of stomach cancer diagnosed in the Korean population, the early-diagnosis of stomach cancer and the treatment has witnessed a great development in recent years. In fact, according to National Cancer Information Center (2017), the five-year cancer survival rate for gastric cancer has been 74.4 percent, while the US had a rate of 31.1 percent. Thus, many physicians have been visiting Korea to learn of its advanced technologies and treatments.

Today's forum covers the details of current trends in stomach cancer in Korean Americans and Asian Americans. I believe today's forum will not only be the start of a new chapter in the field of stomach cancer but would also benefit many Asian Americans to maintain a healthy life. I wish you a successful forum today and ask you for your continued support in promoting Korea's healthcare globally.

Thank you,

Jonghee Oh
Chief Representative
Korea Health Industry Development Institute US Office



GREETINGS



KCS
WWW.KCSNY.ORG

THE KOREAN COMMUNITY
SERVICES OF METROPOLITAN
NEW YORK, INC.

October 6, 2018

Dear Dr. Chul S. Hyun,

It is my honor to be a part of congratulating this inaugural forum on Korean American Stomach Cancer Disparity organized by the Asian American Stomach Cancer Task Force (AASCTF). The deepest respect and appreciation are deserved to the President, Executive officers, and the members of AASCTF for their passion and effort towards "Overcoming Barriers".

KCS, as a multi-social service provider at the frontline of the Korean American community since 1973, will actively participate in this great initiation of overcoming barriers in stomach cancer.

The findings of this forum will be encouraging KCS to provide community education through KCS' Public Health & Research Center, and spearhead advocacy through its internal & external networking against the governments to raise awareness on stomach cancer in Korean Community.

This initial and continued forum of AASCTF will provide a guideline to providers, researchers and community based organizations to devote themselves for providing better life for individuals, community and creating this nation to be great.

Again, I deeply appreciate AASCTF and congratulate this initial forum, "Overcoming Barriers".

Kwang S.Kim, MSW

President of KCS

GREETINGS



HOUSE OF REPRESENTATIVES
WASHINGTON, D. C. 20515

BILL PASCRELL, JR.
NINTH DISTRICT
NEW JERSEY

October 6, 2018

Dr. Chul S. Hyun, Chair
The Asian American Stomach Cancer Task Force
35 Van Nostrand Ave.
Englewood, NJ 07631

It is my pleasure to recognize the Asian American Stomach Task Force (AASF) *'s Korean American Stomach Cancer Disparity: Overcoming the Barriers* forum. As you continue to advocate for the health and well-being of Korean Americans, please accept this letter of Special Congressional Recognition.

Catering specifically to the needs of Asian Americans, I wish you well as you continue to champion their health. Special thanks to Dr. Chul S. Hyun for all his contributions. I am thankful for all that the AASF does in the Ninth Congressional District.

As your friend in Congress, should ever be in need of assistance, please do not hesitate to contact me.

Sincerely,

A handwritten signature in blue ink that reads "Bill Pascrell Jr." with a stylized flourish at the end.

Bill Pascrell Jr.
Member of Congress



Epidemiology of Stomach Cancer Disparity in Korean Americans

Eunjung Lee, PhD

Assistant Professor of Research, Department of Preventive Medicine, Keck School of Medicine, University of Southern California

Stomach cancer incidence shows substantial racial-ethnic disparity in the United States (US), with Korean Americans experiencing by far the highest incidence. Our group used the 1988-2012 California Cancer Registry data and reported stomach cancer incidence rates by racial-ethnic groups, sex, and tumor characteristics.

Although the stomach cancer incidence rates in Korean Americans were only 40% (for men) and 50% (for women) of the rates in South Korea, Korean Americans had about 5 times greater incidence than non-Hispanic whites and twice that of Japanese Americans. Tumor characteristics with respect to subsite and histology showed difference by ethnicity and sex: the proportion of cardia stomach cancer was highest among non-Hispanic white men and lowest among Korean American men and women, and the intestinal type histology was more frequent among men than in women for all racial-ethnic groups. The stomach cancer incidence in Korean Americans has declined during recent years, for both cardia- and non-cardia sites and for both intestinal- and diffuse-type histology. Korean Americans were diagnosed at an earlier stage than other Californians. However, the proportion with localized disease in Korean Americans (43% in 2006-2012) was much smaller than those in South Korea (57%) and Japan (55%), where population-based screening is available.

The unfavorable stage distribution in Korean Americans compared to South Koreans or Japanese indicate that additional prevention and screening strategies need to be implemented targeting high risk immigrant populations such as Korean Americans. Lung cancer screening in the US provides a precedent for targeted screening of asymptomatic high risk populations. It is timely to consider insurance coverage of stomach cancer screening for high-risk populations such as Korean Americans and other high risk Asian Americans.

Reference article: Lee et al. *Cancer Epidemiol Biomarkers Prev* 2017; 26(4):587.

EDUCATION AND PROFESSIONAL APPOINTMENTS

EDUCATION:

1997 B.S., Pharmacy, Seoul National University, Seoul, Korea, Cum Laude
 1999 M.S. Pharmacy (Molecular Biology), Seoul National University, Seoul, Korea
 2008 Ph.D, Epidemiology, University of Southern California, Los Angeles, California

POST-GRADUATE TRAINING:

2008-2011 Postdoctoral Training, Department of Preventive Medicine, University of Southern California, Los Angeles, CA

ACADEMIC APPOINTMENTS:

2011-present Assistant Professor of Research, Department of Preventive Medicine, University of Southern California, Los Angeles, CA

RESEARCH AND SCHOLARSHIP

RESEARCH INTERESTS:

My recent research is focused on environmental chemicals on breast cancer risk and cancer disparity in less well-studied Asian subgroups including Korean and Vietnamese Americans in California.

PROFESSIONAL SOCIETY MEMBERSHIPS:

2008-present American Association for Cancer Research (AACR)
 2009-present AACR Molecular Epidemiology Working Group

PUBLICATIONS (SELECTED FROM 47 PEER-REVIEWED PUBLICATIONS)

- Lee E et al. Stomach cancer disparity among Korean Americans by tumor characteristics: comparison with non-Hispanic whites, Japanese Americans, South Koreans, and Japanese. *Cancer Epidemiol Biomarkers Prev.*, 2017 Apr; 26(4):587-596.
- Lee E et al. Hormone metabolism pathway genes and mammographic density change after quitting estrogen and progestin combined hormone therapy in the California Teachers Study. *Breast Cancer Res.* 2014 Dec 11;16(6):477
- Lee E et al. Genetic variation in transforming growth factor beta 1, parity, and mammographic density in Singapore Chinese women. *Cancer Res.* 2013 Mar 15;73(6):1876-82.
- Lee E et al. Characteristics of triple-negative breast cancer in patients with a BRCA1 mutation, results from a population-based study for young women. *J Clin Oncol.* 2011 Nov 20;29(33):4373-80.

BOOK CHAPTER:

Wu AH, Lee E, Stram DO. Breast cancer among Asian Americans. In: *Cancer Epidemiology Among Asian Americans*: 187-218, 2016. Springer; ISBN 978-3-319-41118-7

SPEAKERS



Gastric Cancer Screening and Early Treatment

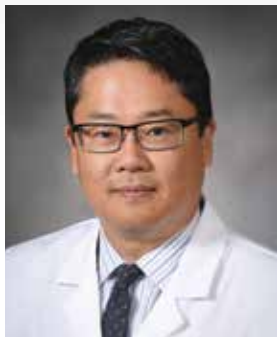
Joo Ha Hwang, MD, PhD

Director, Interventional Endoscopy and Innovation
Stanford University

Abstract:

Gastric cancer is the 3rd leading cause of cancer worldwide; however, the overall incidence of gastric cancer in the United States is low, which is why there are few recommendations regarding screening for gastric cancer in the US. It is known that certain ethnicities are at extremely high risk for gastric cancer. Korea and Japan both have national guidelines for gastric cancer screening with data to support a cancer-specific mortality benefit from screening. In addition, it is accepted that gastric intestinal metaplasia is a pre-cursor lesion to gastric cancer. However, controversy exists on whether patients found to have gastric intestinal metaplasia require surveillance. Recent studies have demonstrated that East Asians (including Koreans) who have immigrated to the US and those with a history of helicobacter pylori infection are at highest risk for gastric cancer in the US. Endoscopic screening in these populations should be considered to detect early neoplastic lesions that can effectively be treated by endoscopic resection.

Dr. Hwang is the Director of Interventional Endoscopy at Stanford University and specializes in diagnosis and treatment of gastrointestinal malignancies including gastric (stomach) cancer, esophageal cancer, pancreatic cancer, bile duct cancer and colon cancer. Dr. Hwang performs advanced endoscopic procedures including endoscopic submucosal dissection (ESD) to resect early gastric, esophageal and colorectal cancers. Dr. Hwang received his bachelor's degree from the University of Illinois at Champaign-Urbana in electrical engineering. He then received his M.D. degree from the University of Chicago and his Ph.D. in bioengineering from the University of Washington. He did his residency in internal medicine and fellowship in gastroenterology at the University of Washington and was a faculty member at the University of Washington from 2004 to 2017. He has been selected as one of "Seattle's Top Doctors" by both Seattle Magazine and Seattle Metropolitan Magazine. Dr. Hwang is board certified in gastroenterology. He is active with local, national and international professional societies. He is a fellow of the American Society of Gastrointestinal Endoscopy (FASGE) and is a past-president of the Pacific Northwest Gastroenterology Society.



***“Korean Gastric Cancer:
New Direction to Improve Outcomes”***

Joseph Kim, MD
University of Kentucky

Half of all new gastric cancer cases worldwide occur in East Asia. Korea has the highest incidence rate and the second highest mortality rate, next to China, for gastric cancer in the world. Unfortunately, annual decreases in gastric cancer incidence in Korea have been insignificant. According to the Korea Central Cancer Registry, gastric cancer was the highest incidence cancer for females until 2001, and has remained the highest incidence cancer for males in 2014. Koreans may have a higher risk for developing gastric cancer because of prevalent etiologic risk factors. *H. pylori* infection has been classified as a carcinogen for non-cardia gastric adenocarcinoma and accounts for 80% of non-cardia gastric cancers in men and 78.7% in women. Additional risk factors for gastric cancer include tobacco use and diet. Salty, smoked, pickled, and preserved foods have been associated with increased risk of gastric cancer. Some traditional Korean foods, such as kimchi and soybean paste, have been found to be associated with increased risk of gastric cancer. Advances in screening programs and surgical techniques provide potential for improving outcomes for patients with gastric cancer in Korea. Furthermore, advances in gastric cancer research show potential for expediting the drug screening process. Patient-derived organoids are accurate, 3D models of human development that have been established for gastric cancer. These *in vitro* models develop quickly compared to patient derived xenografts and therefore, can be used to efficiently screen potential novel therapies.

Dr. Kim completed a clinical and research fellowship in surgical oncology at the John Wayne Cancer Institute in Santa Monica, California. His experience also includes surgical oncology leadership roles at City of Hope in Duarte, California and SUNY-Stony Brook, where he specializes in gastrointestinal cancers.

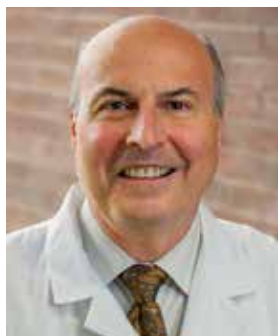
Dr. Kim is board certified in surgical oncology and specializes in the treatment of hepatobiliary and gastrointestinal cancers. He performs hyperthermic intraperitoneal chemotherapy (HIPEC), an innovative procedure that delivers chemotherapy to the abdomen during surgery. He has performed more than 100 complex robotic GI procedures and has more than 15 years of experience with HIPEC procedures.

At Markey Cancer Center, Dr. Kim also serves as chief of surgical oncology.

Dr. Kim is a member of the surgical oncology team at the UK Markey Cancer Center dedicated to multidisciplinary evaluation and treatment.



SPEAKERS



Comparison of Gastric Cancer Outcomes East vs. West

Steven Brower, MD

Englewood Hospital Medical Center and Icahn School of Medicine at Mount Sinai

Many potential causes of disparities and outcomes for Gastric Cancer exist in comparing Asian and Western populations. Moreover, outcomes for the treatment of Gastric Cancer for Asian Pacific Islanders who migrate to the United States are quite different than Caucasian, Latino, and African American populations.

The metropolitan NYC area has a unique population of Korean and Chinese immigrants who are at high risk for Gastric Cancer. We will present our results with newer diagnostic techniques for Early Gastric Cancer and Ethnicity as a prognostic index for outcome in Early Gastric Cancer within an Urban Center caring for Chinese American individuals.

Steven T. Brower, MD is the Chief of Surgical Oncology and the Medical Director of the Cancer Treatment and Wellness Center at Englewood Hospital and Medical Center. Dr. Brower, a nationally recognized hepatobiliary and gastrointestinal cancer surgeon, specializes in minimally invasive surgery for complex cancer cases involving the liver, stomach, esophagus, and pancreas. As medical director of the new Cancer Treatment and Wellness Center, Dr. Brower collaborates with other physicians and staff to organize disease management teams, focused on a comprehensive approach to cancer prevention, screening, diagnosis, and treatment.

Dr. Brower most recently was vice chairman of surgery at the Icahn School of Medicine at Mount Sinai, where he remains on the faculty as a professor. He was also the chief of surgical oncology and director of strategic planning and extramural affairs at the Continuum Cancer Centers of New York.

Dr. Brower received his medical degree from the State University of New York at Buffalo and later completed his internship and residency at Boston University. He then completed fellowships in surgical oncology at the Surgery Branch and Laboratory of Biochemistry at the National Cancer Institute and Boston University Medical Center.

Dr. Brower is a member of MD Partners, the physician network of Englewood Hospital and Medical Center.

OTHER PARTICIPATING AASCTF MEMBERS



Johng S. Rhim, MD

Dr. Rhim has served as an associate director, the CPDR and professor of surgery in the department of surgery, in the USUIIS, in Bethesda, MD, a state-of-the-art translational march program that studies prostate cancer and prostate disease in the military healthcare system. Working in this capacity since 1999, he has also been a research professor in the department of surgery since 2000. Dr. Rhim spent 12 years as a project director of cancer research at Microbiology Associates, and 20 years as a settler investigator for the National Cancer Institute, both located in Bethesda, MD. He is an internationally recognized pioneer in the field of human cell transformation and his success in the development of cell culture systems has opened this field to the analysis of cellular, molecular and genetic mechanism of actions of chemical carcinogens, oncogenes and radiation.

Earning an MD at Seoul National University College of Medicine in the Republic of Korea in 1957 Dr. Rhim came to the United States in 1958. He quickly began working as a research fellow at the Children's Hospital; Research Foundation in Cincinnati, OH, then worked in the same capacity at Baylor University College of Medicine in

Houston, TX, for another two years. A research associate for the Graduate School of Public Health at the University of Pittsburgh and at Louisiana State University School of Medicine thereafter, he subsequently spent two years as a visiting scientist at the National Institute of Allergy and Infectious Disease, National Institute of Health, from 1964 to 1966.

Dr. Rhim has also been a longtime adjunct professor at Georgetown University Medical Center in Washington, DC, since 1988. He has also served as an editor for "Neoplastic Transformation in Human Cell Culture" numerous times, was on the editorial board for several journals, including the "International Journal of Oncology Prostate Cancer and Prostate Disease," and has contributed more than 300 articles, book chapters, and patented work to his field.

A longtime member of several organizations; including the American Association For the Advancement of Science, the American Medical Association, and the American Association of Cancer Research, Dr. Rhim is a patentee holder in his field who has been cited in numerous issues of "Who's Who in America, Who's Who in Medicine and Healthcare, and Who's Who in Science and Engineering since 1999. Married since 1962. Dr. Rhim has six children and thirteen grandchildren.

In recognition of outstanding contributions to his profession and the Marquis Who's Who community, Dr. S. Rhim, MD, has been featured on the Albert Nelson Marquis Lifetime Achievement website. Please visit www.1tchivers.com for more information about this honor.



Chan Hyung Park, MD

Chan Park had an MD degree from SNUCM in 1962;

Completed Rotating Internship at St. Francis General Hospital, Univ. of Pittsburgh, 1965;

Completed Residency in Internal Medicine at Jackson Memorial Hospital, Univ. of Miami, 1968;

Completed 3 years course of PhD. at the Univ. of Toronto, 1971;

Completed 2 year course in the Fellowship in Medical Oncology at Roger, Williams General Hospital, Brown University, Providence, RI, 1974;

Assistant Professor of Medicine, Medical Oncology at the Kansas University Medical Center, 1974, Associate Professor with Tenure, 1980, and Full Professor of Medicine 1986;

Professor of Medicine, Chief of Hematology-Oncology and the Director of Cancer Center at the Texas Tech University Health Sciences Center 1989-1994;

Professor of Medicine, Chief of Hematology-Oncology, and the Director of Cancer Center, Samsung Medical Center/Sungkyunkwan University 1994-2001,

Professor Emeritus of Medicine Sungkyunkwan University 2001-now



OTHER PARTICIPATING AASCTF MEMBERS



In Hwan Oh, PhD

In Hwan Oh is interested in organizational leadership and collective intelligence. He studied and identified leadership involved in integration and assimilation of Korean Americans to the U.S. at an individual level, community level, and the US government level. Also identified was a road map for Korean Americans in the U.S. for the future. Dr. Oh is running as president and CEO of the Leadership and Group IQ Institute (L&GIQI). He is vice chair of the board of directors of International Council for Korean Studies (ICKS) in DC.

He had management and leadership experience for many years at work and in community in leading organizations such as for the National Management Association (NMA), Korean-American Scientists and Engineers Association (KSEA), Korean-American Scholarship Foundation (KASF), Seoul National University Alumni Association (SNUAA) in the USA, and Council of the Korean Universities Alumni Associations (CK-UAA) in the Washington, D. C. Metropolitan area.

Dr. Oh's earlier professional background was in the areas of space mission engineering, mission management, process engineering, and quality engineering. He worked for Wolf R&D Corporation and Computer Sciences Corporation together for about 39 years in various space programs as mission manager and on-site manager for the NASA's space missions and NOAA's weather satellite navigation missions. His expertise also included process, systems, and quality engineering and related audit programs.

His academic background was in astronomy and astrophysics, and organizational leadership. He has a BS degree (1967) in Astronomy from Seoul National University, Seoul, Korea, and a MS degree (1973) in Astronomy from Pennsylvania University, University Park, Pennsylvania. He obtained his doctoral degree (2013) in organizational leadership from University of Phoenix.



Minkyung (Min) Song, PhD

Dr. Minkyung Song fosters, manages, oversees and analyzes the NCI portfolio on multidisciplinary, translational and clinical research grants and cooperative agreements for:

- Clinical trials and associated correlative studies for chemotherapy, immunotherapy, cellular therapy, gene therapy, radiation therapy, surgery, or their combinations;
- Discovery and development of new or improved anti-tumor interventions; and
- Development and validation of clinical tools for predicting or monitoring responses (adverse reactions and efficacy) to therapies, innate and adaptive immunity, primary and acquired resistance, and recurrence of cancer.

Dr. Song serves for the Cancer Moonshot Implementation Team for Blue Ribbon Panel Recommendation on the "Cancer Immunotherapy Translational Science Network." She currently serves as the NCI Program Contact

for several funding opportunity announcements (FOAs), including five Cancer Moonshot FOAs, and trans-NIH FOAs for: extramural-intramural collaborative research at the NIH Clinical Center; and adverse drug reaction research.

Dr. Song has participated in many trans-NIH activities, including: the Research, Condition, and Disease Categorization (RCDC) Immunotherapy Category Finger Print Working Group (WG); the Adverse Drug Reactions WG; the Pharmacogenomics Research Network; the Rigor and Reproducibility Focus Group; the Translational Research Interest Group; mentoring two NIH Director's Early Independence Awardees, four NIH Lasker Clinical Research Scholars, and graduate students and early-stage postdoctoral fellows supported by the NIH Office of the Director Translational Science Training and Education Program; and coordinating dozens of scientific conferences/symposia/workshops at the NIH.

Dr. Song has received various Awards and Certificates, including NCI Director's Awards, NIH Merit Awards, the NIH Director's Award, and a Certificate for completing the NIH Senior Leadership Program.

Dr. Song earned her B.S. degree in Biochemistry from Yonsei University (Seoul, Korea) in 1976, and her Ph.D. degree in Biochemistry and Molecular Biology from the University of Minnesota Medical School in 1983. She was a Visiting Post-Doctoral Fellow and a Senior Staff Fellow in the NIH Intramural Research Program for more than 5 years. Then, Dr. Song was an Interdisciplinary Regulatory Review Scientist in the Food and Drug Administration for 9 years prior to joining the DCTD in 1997 as a Program Director.

OTHER PARTICIPATING AASCTF MEMBERS



Myong Ho (Lucy) Nam, MD

Dr. Nam is the Medical Director of the Inova Laboratories, a Reference Laboratory for the Inova Health System, and the Medical Director of the School of Clinical Laboratory Science at the Inova Fairfax Hospital. She has been with Inova Health System since 2004 mainly at the IFH and ICL. She is a System Advisor for the Quality and Standardization of laboratory testing and Utilization Review.

Inova Health System serves 75% of the Northern Virginia population and consists of 5 acute care hospitals with Inova Fairfax Medical Campus for the tertiary referral center including IFH, IFCH, IWH and IHVI, Inova Shar Cancer Center, 6 emergency care centers and 33 outpatient clinical practice offices for primary care as well as specialty services.

She has 27-years of experience in pathology practice in both Anatomic and Clinical Pathology and holds subspecialty boards in Hematopathology and Transfusion Medicine. Prior to joining Inova Healthcare System, she practiced at the Washington Hospital Center, flagship hospital for the MedStar Healthcare Corporation in Washington DC area for 17 years.

She is a Cum Laude graduate of Seoul National University College of Medicine. She has received AFIP's prestigious Calendar-Binford fellowship. She served as the President of the Washington Society of Pathologists for 1994-1995. She also served as a member of the CAP DIRC committee for 2000-2005.



Park, Haeseong, MD

I am a clinically active gastrointestinal oncologist and clinical investigator focusing on early-phase human trials and bringing novel basic science findings to the clinic. My clinical focus is gastroesophageal cancer. Currently, I serve as an Assistant Professor in Medicine and Associate Director of Siteman Cancer Center's Developmental Therapeutics Program. I joined the faculty as at Washington University School of Medicine in December 2015 after completing an advanced fellowship training at the University of Texas MD Anderson Cancer Center, Department of Investigational Therapeutics. My prior clinical training was completed at Virginia Commonwealth University. I received my MD degree from Seoul National University, and a Master of Public Health degree from Johns Hopkins Bloomberg School of Public Health. My goal is to provide patients suffering from advanced cancers with novel, effective therapeutic options that will extend survival and improve quality of life. My research focus is in early phase clinical trials.



OTHER PARTICIPATING AASCTF MEMBERS



Steve Sung Kwon, MD, MPH

Steve Sung Kwon, MD, MPH, is a surgical oncologist and health service researcher interested in improving surgical quality for cancer patients. Dr. Kwon earned his medical doctorate from the University of Illinois College of Medicine, where he had been named an Edmund James Scholar; and his master of public health degree in epidemiology from University of Washington Medical Center, where he also completed his residency. Dr. Kwon also holds a Global Health Certificate from the University of Washington Department of Global Health. He completed his fellowship in complex general surgical oncology at Memorial Sloan Kettering Cancer Center.

Dr. Kwon is affiliated with Holy Name Medical Center and co-directs the liver center in junction with Dr. James Park from New York University Hepatology division, and is an clinical assistant professor at Columbia University Medical Center where he is engaged in clinical research to investigate the use of quality improvement metrics among surgical patients through the Center for Innovation and Outcomes Research.



Chul Hyun, MD, PhD

DR. CHUL S. HYUN obtained his B.A. from the Johns Hopkins University in 1977. After earning an M.D. from the University of Miami School of Medicine, he underwent internship and residency in Internal Medicine at Georgetown University Medical Center. Subsequently, he completed Gastroenterology and Liver Fellowship at Yale University School of Medicine. Dr. Hyun has also obtained a Ph.D. in Biophysics at the University of Rochester School of Medicine. His research training was further enriched in a postdoctoral fellowship in Physiology at the University of Chicago School of Medicine.

He is Board certified in Gastroenterology and has served as a clinical faculty in the Division of Gastroenterology and Hepatology at the Weill Cornell Medical College. Dr. Hyun speaks frequently in both academic and community settings on various digestive disease topics, including viral hepatitis and stomach and colon cancer. Dr. Hyun has served as a Board Member of the New Jersey State Board of Medical Examiners. Dr. Hyun has also served as the president of Korean American Medical Association (KAMA, 2011-2013) and is the founding President of World Korean Medical Organization (WKMO, 2012-2015), a global network of 140,000 physicians of Korean descent devoted to promoting educational experience and networking among the physicians throughout the world. He is currently serving as the chair of the Asian American Stomach Cancer task Force (AASCTF), a non-profit organization devoted to raise awareness and to seek resources for Asian Americans on prevention, detection and treatment of stomach cancer.

KOREAN AMERICAN
CIVIC EMPOWERMENT

22nd ANNUAL GALA 2018

PROTECTING *and*
ADVOCATING *for*
Immigrant Communities

Thursday, October 25th, 2018

6pm Cocktail Reception | 7pm Gala Dinner

Dae Dong Manor

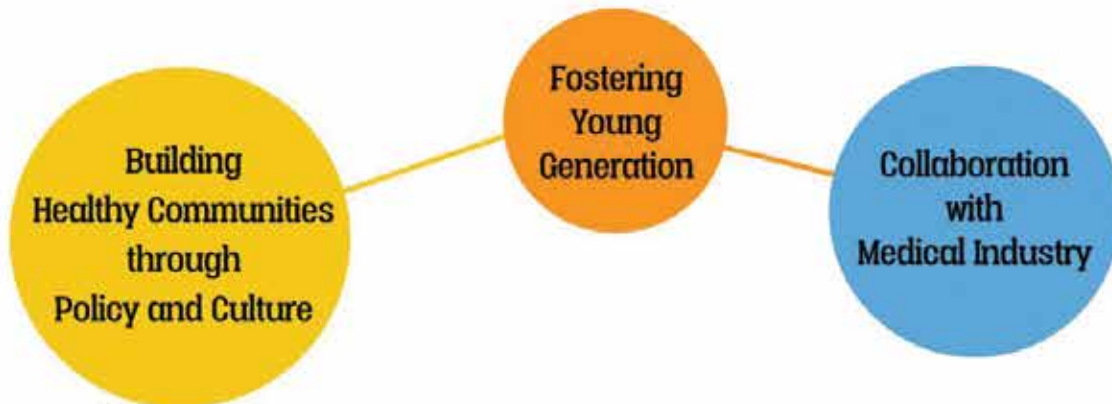
150-24 Northern Blvd. Flushing, NY 11354





World Korean Medical Organization

- Is a unique global network of 140,000 physicians of Korean heritage
- Currently has 15 national chapters
- Devoted to promoting educational experience and networking among the physicians throughout the world



WKMO FORUMS

**"Healthcare in North Korea:
Current and Future Challenges"**

Seoul National University
Institute for Health and Unification Studies

Keynote Speaker:
Ui-Hwa Chung, MD
Speaker, National Assembly

**"Symposium on
Global Health Disparities"**

Rayburn House Office Building
Washington DC

Keynote Speaker:
Congressman Mike Honda
Congressman Charles Rangel





Bergen County's only hospital in the top 5% in the nation for patient safety

2018 HEALTHGRADES® PATIENT SAFETY EXCELLENCE AWARD™

Englewood Hospital is a proud recipient of the Healthgrades 2018 Patient Safety Excellence Award. This national designation recognizes hospitals that perform exceptionally well in preventing serious and potentially avoidable

complications in patients during their hospital stays. Earning the Patient Safety Excellence Award from Healthgrades is a testament to the tireless efforts of our entire staff and their commitment to providing the best, and safest, medical care.



ENGLEWOOD HEALTH

englewoodhealth.org



HOLY NAME MEDICAL CENTER

IT'S NOT JUST OUR JOB TO SERVE EVERY MEMBER OF OUR COMMUNITY.
IT'S OUR MISSION.

1,000 PHYSICIANS
LEADING-EDGE MEDICAL & SURGICAL SPECIALTIES
CULTURALLY SENSITIVE, COMPASSIONATE CARE

EMERGENCY CARE CENTER * REGIONAL CANCER CENTER * CARDIAC AND STROKE CARE
MINIMALLY INVASIVE SURGERY * BREAST CENTER * ASIAN LIVER CENTER
ASIAN DIABETES CENTER * DIALYSIS CENTER * INPATIENT SERVICES
CENTER FOR SLEEP MEDICINE * CENTER FOR PHYSICAL REHABILITATION * ORTHOPEDIC CENTER
MULTIPLE SCLEROSIS CENTER * RADIOLOGY SERVICES * HOME HEALTH CARE
HOSPICE AND PALLIATIVE CARE * MATERNAL/CHILD HEALTH SERVICES * PAIN MANAGEMENT SERVICES
KOREAN MEDICAL PROGRAM * CHINESE MEDICAL PROGRAM * FILIPINO MEDICAL PROGRAM

Holy Name Medical Center 
Asian Health Services

718 Teaneck Road, Teaneck, NJ 07666 | www.holyname.org | For Asian Health Services, call 201-833-3399



North American
Partners in Anesthesia®



North American Partners in Anesthesia

IS PROUD TO SUPPORT

the lifesaving efforts of

**The Asian American
Stomach Cancer Task Force**





KCS
WWW.KCSNY.ORG

THE KOREAN COMMUNITY
SERVICES OF METROPOLITAN
NEW YORK, INC.

뉴욕한인봉사센터

CONGRATULATIONS & THANK YOU

TO

**ASIAN AMERICAN STOMACH
CANCER TASK FORCE**

INAUGURAL
FORUM

FROM KOREAN COMMUNITY
SERVICES OF METROPOLITAN NEW
YORK, INC.

PUBLIC HEALTH AND RESEARCH CENTER

WWW.KCSNY.ORG T. 212-463-9685 HEALTH@KCSNY.ORG



한인 동포의 힘, 미 동부 최대 한인 라디오 방송

24/7 Korean Broadcasting



웹사이트(Website) :
www.am1660.com



모바일앱(Mobile App) :

안드로이드(Android)-플레이스토어(Play Store)에서 'am1660' 검색
아이폰(iphone)-앱스토어(App Store)에서 'am1660' 검색



카카오톡(kakaoTalk) :
'am1660' 검색



페이스북(FaceBook) :
'kradio kradio' 검색



유튜브(YouTube) :
'am1660 k-radio' 검색

연중 주요행사

- New York Music Concour
- Manhattan Music Competition
- K-Radio Open Golf
- 한국 정상급 뮤지션 Concerts
- 동포사회 각종 문화행 주최 및 후원

연락처 (Contact Info)

Bayside (Headquarter)

209-35 Nothern Blvd,
#212
Bayside, NY 11361
Tel : 718-352-1660
FAX : 718-352-1663

Manhattan

37W 32nd Street, 5Fl
New york, NY 10001
Tel : 614-699-1660
FAX : 646-649-5565

New Jersey

530 Main Street, #4
FortLee, NJ 07024
Tel : 201-242-1660



The Asian Women's Christian Association (AWCA) is a 501(c) (3) nonprofit social service agency located in Teaneck, NJ. This year, the AWCA celebrates its 38th year of service to the community according to our mission statement:

Mission Statement

AWCA is centered on love of Christ, and through our work we provide Asian women and their families with the resources to become healthy, contributing members of society. We accomplish this through our counseling, education, social services, and homecare program.

AWCA는 예수님의 사랑 안에서 전문상담, 교육, 사회복지 서비스 및 홈케어 프로그램을 제공함으로써 아시아 여성과 그들의 가족이 건강한 자원으로 지역사회에 공헌할 수 있도록 돕는 것을 목적으로 한다.

The following programs are provided by the AWCA —

- **Asian Senior Activity Center**
- **Family Counseling Center**
- **Social Welfare Counseling & Service Center**
- **Youth Center**
- **Home Care Agency**



erving with love

ASIAN WOMEN'S CHRISTIAN ASSOCIATION

9 Genesee Avenue, Teaneck, NJ 07666 T.201 862 1665 F. 201 862 1662

info@awcanj.org www.awcanj.org





Quality, Service, Research

(재)서울의과학연구소
Seoul Clinical Laboratories

We Design the Future

Future beauty, created by cutting edge medical science,
SCL positions in the center.



- Diagnostic laboratory services
- Special chemistry
- Genome research
- R&D center
- Central laboratory for clinical trial studies

- Molecular diagnosis
- Functional medicine
- Diagnostic pathology
- Research tests

I TEL +82-2)1800-0119

I WEB www.scclab.co.kr

CVH

Center for Viral Hepatitis

바이러스간염진료센터

- ✔ **To promote the awareness of hepatitis B**
- ✔ **To screen in high risk population**
- ✔ **To facilitate the linkage to care**

SCREENING

Get tested and be prepared

EDUCATION/ RESEARCH

earn what's new on
viral hepatitis

HEPATITIS EXPERTS

Find specialists
around you

LINKAGE TO CARE

Engage yourself to
access health care

www.cureHep.org



MEDICAL KOREA

2019

The 10th Global Healthcare &
Medical Tourism Conference



March 14-16, 2019

Grand InterContinental Seoul Parnas

